



**SALE BY AUCTION OF  
THE G W HAMMOND COLLECTION  
OF VINTAGE TRACTORS  
& MACHINERY**

**WEDNESDAY 15 SEPTEMBER | 10.30AM**

**Manor Farm | Aldborough | Norwich  
NR11 7NR**



Lot 445



Lot 443



Lot 470



Lot 474

RESIDENTIAL | COMMERCIAL | AGRICULTURAL

**Arnolds | Keys**  
Irelands Agricultural



LOT NO. VAT	MISCELLANEOUS - IN THE BARN
1	Qty of binder canvasses A/F
2	Qty of hessian sacks
3	Qty of sundry drive belts
4	Qty of cutter bars - 5ft long
5	Bramber Wire reel/collector
6	Electric motor - 240v/3hp type D112M
7	Qty of electric motors
8	Rippingille's Fyrside paraffin heater
9	Vintage wheel chair - for renovation
10-11	Qty of milk churns (2 Lots)
12	Glass demi johns x 2
13	Galloping horse weather vane
14	Ceramic glazed lamp c/w qty of heat lamps - A/F
15-16	Qty of Hand mills/grinders (2 lots)
17	Small screw jack
18	Qty of bushells
19	Qty of hand jugs
20	Set of Blacksmiths bellows
21	Qty of Blacksmiths tools
22	Qty of Clock and window weights
23	Seed fiddle
24	Qty of seed drill gears
25	Balancing hanging scales
26	Qty of Ferguson spares
27-31	Qty of Ransomes plough parts (5 Lots)
32	Qty of horse shoes
33	Qty of mole traps
34	Butter churn - Victoria churn by 'Waide & Sons of Leeds'
35-36	Vintage Tractor seat 'Pierce' (2 lots)
37-38	Vintage Tractor seat 'Blackstone & Company Ltd' (2 lots)
39	Vintage Tractor seat 'Bamlett'
40	Vintage Tractor seat 'Martin'
41	Vintage Tractor seat 'W E Co Ltd'
42	Vintage Tractor seat 'Bamfords'
43	Name plate: 'Mason Builder Fakenham'
44	Name plate: 'F & H Randell, North Walsham'
45	Name plate: 'J A Christie of Holverstone'

46	Name plate: 'J Blackett Manufacture, Sculthorpe'
47	Name plate: 'Hathaway Maker - Butter churn makers plate'
48	Qty of oil drums
49	Shell M 25 oil can
50	Regent oil can
51-52	Vintage petrol fuel cans (2 Lots)
53-56	Vintage petrol can: 'Shell Max' (4 lots)
57-58	Vintage petrol can: 'Shell Motor Spirit' (2 lots)
59	Vintage petrol can: 'Pratts'
60	Embossed enamel tin image of The Case Steel Separator
61	Framed Farmers Weekly poster - 'Guide to Tractors of the 1930s and 1940s'
62	Print of Steam Engine - Chas Burrell & Sons Ltd, 1900 No. 2319
63	Case Tractor lubrication chart
64	Qty of Tractor / Vintage Rally exhibitor plates
65-74	Open lots (10 lots)
<b>INCLUDED BY PERMISSION - IN THE BARN</b>	
75	Single Cyl engine Magnetos for spares or repair
76	Engine starter. CAV maker. Type S5 – 89
77	Blacksmiths steel swage block
78	Flat drive belts / Leather x 5
79	Flat drive belts / Canvas x 15
80	Qty of V belts selection (est 50)
81	Cast iron 'Lee Howl' water hand pump with Flag marking. Post mounted
82	Well head , double gear pump drive. ( Missing drive pulley)
83	Cast iron 'Lee Howl' Dia. pump. Ground level mounting for 1 or 2 hand lever drive
84	Wrought iron shelf brackets x 9 for 10inch boards
85	Ferguson r/h side lift arm , level box and winding leg
86	Vintage tractor trailer cable hand brake winding unit
87	V belt pulleys x 10 (est)
88	Wind up gramophone motors and spares x 8 (est)
89	Bench mounted cast iron hand drill with self feed. 2 foot tall x 8inch
90	Bench mounted cast iron hand drill with self feed by Smith & Daniels, Gt Yarmouth
91	Shepherds hut square stove. Unused. Ex Fransham Forge. 21inch tall . Top exit flue
92	Chain land measure
93	Cylinder brass fuel tank. 7.5inch dia x 16inch
94	Cylinder steel fuel tank. 4.5inch dia x 10inch
95	Cylinder steel fuel tank 6inch dia x 8inch
96	Cast alloy bolt on gate and railing flower features



97	Carriage/ veteran car polished brass oil lamps Marked 'E&J' Detroit. Mich. 1908
98	Green leather 1950s car front seats x 2. 23inch wide x 25inch tall
99	Boat bronze propeller. 14inch dia x 1.5inch bore
100	Woodworkers 9inch wide bench vice x 2. Makers Parkinsons No 5
101	J.A.P single cyl 4 stroke engine for spares. Pull start
102	Pipe gripping wrench x 6. Fixed taper jaws. 5 sizes
103	Fuel tank Inspection Unit. Mk 1A. Ref 5A/3730. Ex RAF/ Army 1940s. Unused cond.
104	Demolition Test set Mk 1. by G B & Co Ltd. Ser No 183 in wooden case
105	Typewriter. Oliver No 3. Standard Visible Writer Patents listed 1891/1898
106	Sewing machine. Hand crank with white china handle and gold lined over black
107	Wooden tool box. Farm made with hinge lid. 3 foot x 9inch x 7inch
108	Wooden tool box. Farm made with hinge lid. 3 foot x 7inch x 6inch
109	Rifle/single bore gun carry case with shoulder strap and brass locking clasp

## ON THE FIELD - MISCELLANEOUS

298	Qty of Scrap
299	Small stone grinding wheel, circa 3' diameter, 6" wide
300	Wooden ladder - 22 stave
301	Wooden ladder - 27 stave
302	Wooden ladder - 45 stave
303	Seeder boxes x 2 A/F
304	Timber draw bar A/F
305-306	Wagon draw bar (2 Lots)
307-309	Set of shafts (3 lots)
310	Qty of Horse pulling trees
311	Qty of timber elevator sides
312	Sledge "Randells of North Walsham"
313	3pt linkage 'A' frame attachment
314	Vintage tractor safety frame
315	Pair of Ferguson discs
316	Boby Dresser
317	Root cutter "A Hoyle of Doncaster"
318	C W S Mangel /Root cutters
319	F Randell Ltd of North Walsham mangel slicer
320	Chaff Cutter
321-323	Sack barrow (3 Lots)
324	Cook's Sack Lifter
325	Hayter lawn mower A/F
326	Qty of Ransomes vintage lawn mowers for spares or repairs A/F

327	Atco 2ft lawn mower c/w roll and seat - for spares or repair
328	Lawn mower Roll c/w seat
329-335	Open Lots (7 lots)

## WHEELS & TYRES

336	Single wheel axle A/F
337	Cast iron single wheel axle
338	Cast iron belt drive wheels on shaft A/F
339	Cart axle
340	Single Cart wheel
341	Pair of Cart wheels
342	Single axle carriage Tolley
343	Single transport wheel
344	Pair of Cambridge Roll wheels
345-354	Qty of cast iron wheels - various sizes (10 Lots)
355-359	Open Lots (5 lots)

## WORKSHOP TOOLS & EQUIPMENT

360	Petrol powered pressure washer
361-363	Platform scales c/w weights (3 lots)
364	Avery platform scales
365	Grinding wheel
366	Qty of stack knives
367	Scythe x 2
368-372	Qty of nuts/bolts/washers/harvester blades/cutter points/hinges/springs (5 lots)
373	Qty of Ransomes Plough spanners
374	Spanner tool board display
375	Display of engineers hammers
376	Lister stationery engine
377-386	Qty of hand tools to inc. Shepherds crook & shears, dibber, drain tools, root chopper, rabbiting spade, post hole auger, root forks, cross cut saws, slasher, pitch forks, tamper, hay rake, thatchers needle, rakes (10 Lots)
387-391	Open Lots (5)

## VINTAGE MACHINERY & EQUIPMENT

392	Mole Plough
393	Trailed 7 leg heavy duty vintage Cultivator
394	Ransomes Dauntless 9 leg Cultivator
395	Ransomes single furrow Plough
396	Ransomes single furrow deep digger Plough
397	Ransomes Uni Trac Major TS 16F single furrow deep digger Plough

- 398 Ransomes TS 42A single furrow Plough
- 399 Ransomes horse drawn single furrow Plough
- 400 Ransomes Sims & Jefferies heavy duty single furrow Plough
- 401 Cooke of Lincoln XL RC horse drawn single furrow Plough
- 402 Ransomes 2 furrow wheeled Plough
- 403 Ransomes No. 9 RS two furrow Plough supplied by F H Knights & Sons, Harleston
- 404 Ransomes horse drawn 2 furrow Duo Trac deep digger Plough
- 405 Ransomes 2 furrow Plough
- 406 Ferguson 2 furrow Disc Plough
- 407 Cooke of Lincoln horse drawn two furrow Plough
- 408 Ransomes 3 furrow plough
- 409 Ransomes 3 furrow wheeled Plough
- 410 Ransomes 4 furrow Plough supplied by F Randell Ltd of Reepham
- 411 Ransomes 5 furrow wheeled Plough
- 412 Vintage Seed Drill
- 413 F & H Randell of North Walsham Seed Drill converted to tractor drawn
- 414 Ling Brothers of Saxthorpe, single seed drill wheel
- 415 Set of Seed Harrows and pulling tree
- 416-418 Set of Seed Harrows (3 Lots)
- 419-420 Set of seed Harrows (2 Lots)
- 421 Pulling Tree
- 422 MBI horse drawn Hoe
- 423 Horse drawn steerage Hoe "Wigg & Sons, Beccles"
- 424 Farmers Foundry Co Ltd, Ryburgh circa 3m wide Flat Roll - for spares or repair
- 425 Farmers Foundry Co Ltd, Ryburgh circa 3m wide Flat Roll c/w towing frame
- 426 Flat Roll, circa 7ft by E Cornish of Saxthorpe
- 427 Cast iron 2ft wide, 2ft dia. Garden Roll
- 428 Horse drawn Hay Rake
- 429 The "Ipswich" solid axle Rake by Ransomes Sims & Jefferies Ltd
- 430 Horse drawn Mangel lifter/harvester
- 431 Guyco 3pt linkage Sugar Beet Lifter
- 432 Hornsby of Grantham MI10 horse drawn Potato Lifter
- 433 Ransomes Sims & Jefferies petrol, single cylinder tractor unit
- 434-438 Open lots (5 lots)

## VINTAGE TRACTORS

- 439 Case C 1935 Vintage Tractor. Petrol paraffin. Chassis No. C447062 on spud wheels c/w road bands. No V5 document
- 440 Case D4 1940 Vintage Tractor. Petrol paraffin. Engine No. 4405379. No V5 document



Lot 439



Lot 440



Lot 441



Lot 442



Lot 443



Lot 444



Lot 445



Lot 446





Lot 447



Lot 448



Lot 455



Lot 456



Lot 449



Lot 450



Lot 457



Lot 458



Lot 451



Lot 452



Lot 459



Lot 460



Lot 453



Lot 454



Lot 467

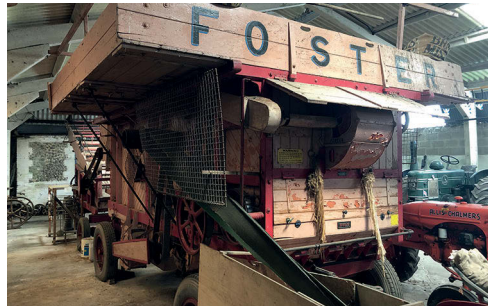


Lot 468

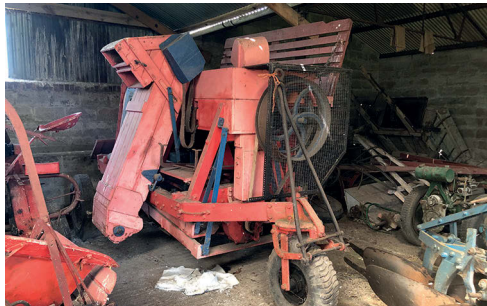




Lot 469



Lot 470



Lot 471



Lot 472



Lot 474



Lot 475



Lot 480



Lot 35-47

- 441 Case LA 1941 Tractor petrol paraffin, electric start. Serial No. 4407798 c/w power take off pulley. No V5 document
- 442 Fordson Power Major 1958 diesel Tractor. Reg No. 1094 AH. Chassis No. 1483727. Date of 1st Reg. 09.09.1958
- 443 Fordson Standard Tractor - 1941. Petrol paraffin. Engine No. 945818. Gearbox No. 2243 c/w belt pulley and adjoining towing frame. No V5 document
- 444 Nuffield Universal M4. 1949 38hp. Tractor. Reg No. GFU 417. Petrol paraffin. Serial No. NT2625 c/w 3pt linkage and pto. No V5 document
- 445 Field Marshall Series III c/w pto. 1953. Reg No. MAH 913. Serial No. 13742. No V5 document
- 446 McCormick Farmall Model H petrol paraffin Tractor - 1950. Engine No. 138049 X3 c/w power take off pulley, pto & 2pt power lift. No V5 document
- 447 McCormick International Farmall Cub Tractor - 1956. Petrol. Serial No. 705932 FF Cub c/w pto. No V5 document
- 448 Minneapolis - Moline Model ZTU Tractor - 1942. Serial No. 569887 - U. Reg No. ENG 379 c/w rear pto. Petrol paraffin. No V5 document
- 449 Minneapolis- Moline Model UTS Tractor - 1940. Serial No. 323778 S c/w power take off belt pulley. Petrol paraffin. No V5 document
- 450 Massey Harris Pony Tractor. Reg No. TVG 468R. Serial No. 45725 c/w belt pulley, pto and mid mounted tool bar lift. Petrol. No V5 document
- 451 BMB President Tractor. Year 1954. Serial No. 188420 c/w with rear pto, belt pulley and linkage arms. No V5 document
- 452 Allis Chalmers Model B Tractor. Petrol paraffin c/w rear pto, hydraulic lift and belt pulley. No V5 document
- 453 Allis Chalmers Model B Tractor. Petrol paraffin. Reg No. DER 778. Front wishbone axle. No V5 document
- 454 Allis Chalmers Model B Tractor. Reg No. OPW 476. Petrol paraffin
- 455 Ferguson TED Tractor. Serial No. 301125. Petrol paraffin, 12 volt. Reg No. ONG 420 c/w pto. No V5 document
- 456 Ferguson TED Tractor. Serial No. 358235, 12 volt c/w rear belts pulley. Petrol paraffin. No V5 document
- 457 Ferguson TEA Tractor. Year 1948. Serial No. 26697. 6 volt. Reg No. GER 290 c/w pto. Petrol paraffin. No V5 document
- 458 Ferguson TED Tractor, pto, 12 volt, petrol paraffin. No V5 document
- 459 John Deere Model B Tractor - Year 1936. Chassis No. 34977 c/w rear pto. Twin front wheels. No V5 document
- 460 John Deere Model B Tractor. Year 1940. Petrol paraffin. Single front wheel. Rear pto. No V5 document
- 461-466 Open lots (6 lots)

#### VINTAGE COMBINE & THRESHING MACHINES

- 467 Ransomes Tractor Combine Harvester model MST56. Year 1954
- 468 McCormick Deering 3 horse Binder - converted to tractor drawn

- 469 Belle City' Corn Thresher. American made. Year 1930
- 470 Foster Threshing Machine and Elevator/Pitcher. No. 83872
- 471 Chaff Cutter Innes "safety" by Geo W King Ltd
- 472 Ogle & Sons Ltd of Ripley Derby Lite Lift, supplied by T W Burton of North Walsham

## TRAILERS & HARVEST WAGONS etc

- 473 Single axle tipping Tumbrel
- 474 Dobbs Bros of Mattishall Harvest Wagon
- 475 Harvest Wagon
- 476 Transport Trailer
- 477 I Davis & Bailey of Boxmoor Works, Hemel Hempstead, former straw elevator converted to Trailer
- 478 Vintage former straw elevator for spares or repair comprises both axles and wheels A/F
- 479 Twin axle plant trailer

## INCLUDED BY PERMISSION

- 480 Fordson Major 1949 E27N Tractor. Reg No. ANG 382S. Engine No. 1108051. Type 4.3. Date of 1st Reg. 01.07.1978
- 481 Church Clock - for restoration poss built by John Watt Clockmaker. Circa 1673-1720
- 482 Raleigh child's bike circa 1940s
- 483 Royal Enfield ladies 28 inch bike - 1920 - for restoration
- 484 Drummond Brothers push cylinder mower
- 485 Amanco 4 Mule Team from the Chore Boy line No. 40853 4hp built circa 1918 - on 4 wheel oak trolley
- 486 Wooden toe jack
- 487 S Corbett & Son, grinding mill
- 488 Raleigh 28inch ladies bike - 1930s - for restoration
- 489 Cast iron hand driven portable forge
- 490 Fordson E27N radiator
- 491 Cooke & Son sack lift
- 492 Hand pillar drill
- 493 Raleigh 26inch gents bicycle, 3 speed & dynamo - for restoration
- 494 Shepherd's hut 6ft x 10ft . Rescued with great care from a garden in Beccles in 2007, with corrugated tin pitched roof and single skin timber weather board cladding . Circa 1900. Four original light cast iron wheels and oak turntable. Door missing. One 4 pane window and place for stove. Medicine cupboard in end. Rescue filmed for Anglia TV Bygones series by Eddy Anderson. Some timber for its major restoration will be included.
- 495 Shepherd's hut 6ft x 10ft. Saved from garden in Knapton, Norfolk. Curved felted roof with later corrugated secondary tin sides. Original wood double skin cladding and lining under. One wooden board shutter opening in end and place for stove. Turntable, wheels and axles missing. Est built circa 1900. For restoration

- 496 Set of 4 shepherd hut wheels in cast iron by Holmes of Norwich circa 1890. Two front wheels 24inch dia. Two rear wheels 34inch dia. All 3.5inch wide with full length wrought iron axles for wood mounting. All wheels banded with later wrought iron tyres. Turntable cast iron discs with "Holmes Norwich " name cast in and centre pivot pin. 2 curved wrought iron arms for horse shafts/drawbar. Wheels will need freeing from axles
- 497 Set of 4 Shepherds hut axles. Cast centre bearing hubs and rims with round steel spokes. All 38inch dia. One wheel rim broken but repairable. Turntable iron ring, four stub axles and "A" frame tractor drawbar. Wheels will need freeing from axles
- 498 Garden roller with wooden handle
- 499 Garden roller with wrought iron handle
- 500 Wrought iron trap/cart axle 60inch long together with cast iron wheel hubs x 2. Leaf springs and mounting steps. Brass hub caps show maker as J Sherward Tewksbury
- 501 Beer carriage small leaf spring set x 4 - 30inch x 1.25inch
- 502 Wickham steam cleaner
- 503 Breakdown rescue dolly by Mann Egerton Norwich. Single axle with lifting under forks
- 504 Oak fire place bressumer beam. 9 feet x 10inch x 9inch
- 505 Barn steps - 9 treads. 8 feet x 28inch wide
- 506 Petter stationary single cylinder engine. Air cooled. Model ASX. 3.18hp. No 301575
- 507 Wood single ladder - 21 feet
- 508 Randell of Nth Walsham. Early 2 wheel all iron horse drawn row crop steerage hoe, converted to tractor drawbar
- 509 Alloy single ladder - 21 feet
- 510 Seed drill iron wheels x 2. Steel round spokes and flat steel rims
- 511 Seed drill iron wheels x 2. Steel round spokes and concave steel rims
- 512 Winch/beach or boat deck windlass by Richard C Gibbons and Co Birmingham
- 513 Un braked car towing trailer, drop down tailgate and ladder frame. 50mm hitch
- 514 2000 litre square welded steel fuel tank with sight tube. Sound and used 2020
- 515 Reclaimed maple flooring in various lengths on pallet. De nailed and dry stored
- 516 Gutter support spikes x 8. Forged wrought iron. Legs 8.5inch x 12inch overall reach
- 517 Steel gate. 5 feet tall by 4 feet with forged spike tops.
- 518 Fordson Standard/E27N Carburettor. Marked Ford
- 519 B.O.C Oxygen and Acetylene set - 1950/60s
- 520 Telephone bells for workshop/outside x 3. 1950/60s
- 521 Vintage grease guns x 5. 1 by ENOTS Autoram in brass. 1 by TECALIEMIT No11 DEUTSCHE in plated chrome & 3 others
- 522 Vintage Garden pump syringe sprayers x 3 , with brass bodies and wood handles
- 523 Massey Ferguson 7ft wide tandem Disc harrow
- 524 Massey Ferguson Sub Soiler C leg type D-Be-28
- 525 Massey Ferguson 7ft wide Spring tine Cultivator
- 526 Massey Ferguson 7ft wide straight leg adjustable point Cultivator



527	Massey Ferguson single furrow Digger Plough
528	Trailed Cambridge Roll - 6ft
529	Howard of Bedford 6ft zig-zag Harrow c/w towing pole
530	Ransomes 8ft wide straight leg Cultivator and thistle bar
531	Ferguson TE-F20 Tractor. Reg No. SPW 673. 1st Reg. 2.5.1955
532	International W6 Tractor with steel wheels. Reg No. EPW 553. 1st Reg. 11.1.1943
533	Allis Chalmers Model B Tractor with bow axle. Serial No. JL6688. Not registered. No V5 document
534	Ferguson 2 furrow Plough
535	Ferguson Spring tine Cultivator
536	Massey Ferguson Fertiliser Spreader
537	Ransomes single leg Subsoiler
538	Ferguson Mill loader with bucket
539	Qty of vintage hand tools
540	Massey 780 combine tank unloader auger
541	Massey 780 combine fuel tank
542	Nuffield Universal rear wheel and tyre
543	Pair of metal threshing machine wheels fitted with 800-19 Dunlop tyres
544	7 Seed Harrows and 2-wheel carrier
545	Copper water storage tank
546	Toyota Hilux Truckman top
547	* Safety cab to fit a Massey Ferguson 135 tractor with mudguards
548	Case Model VA Tractor . Year 1946 - No V5 document
549	Tractor Caterpillar Model 10. Year 1930 - No V5 document
550	Fordson Super Major Tractor - Year 1961. New mudguards, no hydraulics
551	Fordson Power Major Tractor, live drive. Reg No. 771 CRT. 6220 hours. 1st Reg. 20.06.1959. In original condition, some original tools in toolbox. Engine rebuilt inc. new liners, pistons, shells & new battery. Faulty ignition switch needs replacing.
552	* Ford 4600 Tractor with Q cab. Reg No. HVG 394V. 1st Reg. 21.09.1979
553	* Ford 4600 Tractor with AP cab. Reg o. NEX 591P. 1st Reg. 14.05.1976 c/w front loader and bale spike
554	* Ford 4100 Tractor with Q cab. Reg No. VCL 317S. 1st Reg. 5.10.1977 c/w axle mounted Bomford super trim
555	* Ford 6610 Tractor with Q cab. Reg No. C403 XCL. 1st Reg. 4.9.1985 c/w trima 1390 front loader and bale spike
556	* Ford 7810 Tractor. Reg No. H438 TVG. 1st Reg. 4.4.1991
557	* Fordson Major diesel Tractor. Reg No. XVF 76. 1st Reg. 19.2.1958 c/w rear mounted cement mixer
558	Nicholson Cultivator with wings
559	Earth bucket for Ferguson loader X 2

## CONDITIONS OF SALE FOR MACHINERY SALE BY AUCTION

### 1. DEFINITIONS

In these conditions the following terms have the following meanings:

(i) "Auctioneers" means Arnolds Keys Irelands Agricultural, a trading name of Arnolds Key LLP, CRN OC353213 whose registered address is 2 Prince of Wales Road, Norwich, NR1 1LB

(ii) "Commission" means the commission charged on the sale of Lots.

(iii) "Conditions" means the standard terms and conditions of business set out in this document. Any further specific conditions will be contained in a separate statement of special conditions.

(iv) "Entry Form" means the form to be completed and signed by the Seller describing the Lot in such form as may be required by the Auctioneers before the Lot will be accepted for sale.

(v) "Hammer Price" means the price at which a Lot is knocked down by the Auctioneers to the Buyer exclusive of any Value Added Tax and Buyer's Premium.

(vi) "Lot" means any item offered for sale or sold as a single transaction in accordance with these Conditions.

(vii) "Buyer" means a person firm or company who purchases any Lot including any person firm or company acting as an agent for such a party in the purchase of that Lot in accordance with the Conditions.

(viii) "Reserve Price" means the minimum price fixed by the Seller in writing at which any Lot is to be sold at the Sale.

(ix) "Sale" means a sale of the Lots by auction organised by the Auctioneers.

(x) "Saleground" means the venue at which the Sale takes place.

(xi) "Seller" means a person firm or company including any person firm or company acting as an agent for such a party who offers for sale a Lot in accordance with these Conditions.

(xii) "Vehicle" means any tractor self-propelled machine or other vehicles.

(xiii) "VAT Auctioneers' Scheme" means the scheme for the treatment of Value Added Tax by the Auctioneers made under The Value Added Tax (Special Provisions) Order 1995 SI 1268 (as amended).

(xiv) "Working Day" means each day calculated from midnight from Monday to Friday inclusive in any week except that a Bank Holiday or other public holiday shall not be a Working Day.

Except where the context otherwise requires: words denoting the singular include the plural and vice versa; words denoting one gender include the other gender; words denoting persons include both natural and legal persons.

References to any regulation directive statute statutory instrument other legislation or official document include any amendment re-enactment and any other subsequent alteration of that legislation.

### 2. STATUS OF CONDITIONS OF SALE

(i) The Seller has agreed to adhere to these Conditions by signing the Entry Form.

(ii) Any person attending the Sale is deemed to attend on the understanding that they have read and understood these Conditions and shall make any bid on the basis of these Conditions.

(iii) The Auctioneers may supplement or supersede these Conditions in whole or part with special conditions applicable to a specific Sale or a specific Lot which will be displayed and/or announced at the start of the Sale.

(iv) Any dispute arising under these Conditions shall be determined in the first instance by the Auctioneers whose ruling shall be binding on the conduct of the auction. If such an issue remains in dispute after the auction it may be referred by the Buyer the Seller or the Auctioneers to arbitration or if the parties agree independent expert determination within the period of 10 working days starting on the date of the Sale by a person agreed between the parties in dispute or failing such agreement by a person appointed by the President of the Central Association of Agricultural Valuers on the application of any of the parties within that time paying such fee as may be charged for that service. The

parties agree to meet the professional fees and costs of that person as he shall direct and to be bound by his award both as the matter of the dispute and as to the parties' costs.

### 3. ENTRY TO THE SALEGROUND

(i) Any person entering the Saleground does so at their own risk.

(ii) Any person entering the Saleground must comply with the requirements of all health and safety notices.

(iii) The Auctioneers reserve the right to refuse admission to any person or entry of any Lot onto the Saleground without giving any reason.

### 4. AUCTIONEERS' STATUS

(i) The parties to the contract of sale are the Seller and Buyer.

(ii) The Auctioneers sell as agents for the Seller and as such are not responsible for any default of the Seller or Buyer.

(iii) The Auctioneers shall have discretion as to the description of any item and may take expert advice on any item, whether from a qualified electrician, agricultural engineer or other person, at the Seller's expense to ensure that the item is sold in a professional and legal manner.

(iv) The Auctioneers may make such announcements or publish such information supplied by a Seller about any Lot as they in their discretion think fit.

(v) The Auctioneers shall have absolute discretion without giving any reason: to refuse any bid; to divide any Lot; to combine any two or more Lots; to withdraw any Lot from the auction, and/or; in case of dispute, to offer any Lot for sale again.

### 5. EXCLUSION OF LIABILITY

The Auctioneers shall not be liable for any expense loss claim or proceedings in respect of any loss or damage whatsoever to any property real or personal (including any Lot) nor in any respect of personal injury to or death of any person before or arising out of or in the course of or caused by the Sale except to the extent that the same is due to the negligence of the Auctioneers.

### 6. CATALOGUES AND ADVERTISEMENTS

(i) The Auctioneers do not guarantee that any Lot described in any catalogue or advertisement will be offered for sale nor that any description therein can be relied upon as accurate. Any illustrations in catalogues are for general identification only.

(ii) The Auctioneers will not be responsible for any costs incurred by any person in reliance on the description of a Lot in the catalogue and those attending the auction will have no claim against the Auctioneers for their costs should any advertised Lot not be offered at that Sale.

### 7. WITHDRAWAL OF A LOT

In all cases where a Lot once entered is not offered for sale by auction on the Seller's instructions the Auctioneers shall be indemnified by the Seller for all expenses incurred in relation thereto and against all claims from third parties that may arise.

### 8. PRIVATE SALES

(i) The Auctioneers' consent is required for the private sale of any Lot after the Sale while it is on the Saleground. That consent may be given on condition that the Sale is booked through the Auctioneers' office subject to these Conditions and in particular that any fee Commission Buyer's Premium charge or expense due under the Entry Form or otherwise apply as though that Lot had been sold by auction at a Hammer Price equal to the price agreed for the private sale.

### 9. WARRANTY AND INSPECTION OF LOTS

(i) The Auctioneers' knowledge of the Lots is dependent on the information provided by the Seller who has warranted as to its accuracy. The Auctioneer does not carry out exhaustive due diligence on each Lot. The information supplied about Lots is not a representation of fact but a statement of opinion on the basis of the evidence reasonably available. Bidders acknowledge these points and accept responsibility for carrying out inspections and investigations to satisfy themselves as to the Lots in which they may be interested.

(iii) It will be for Bidders to satisfy themselves as to health and safety matters. Bidders including the Buyer acknowledge that Lots have generally been used and many are of an age and type which means that they are not in perfect condition. As such they may not comply with current health and safety legislation and may have faults not expressly referred to in the catalogue or the other information that may be available on individual Lots from the Auctioneers.

(iv) The Buyer must satisfy himself prior to bidding for a Lot as to its condition and should exercise and rely on his own judgement as to whether the Lot accords with its description. The Auctioneers shall have no liability for the accuracy of the description of any Lot. Unless otherwise stated no warranty is given by the Auctioneers to the Buyer in respect of any Lot and any express or implied conditions or warranties are excluded to the fullest extent permitted by law. It is the Buyer's responsibility to check the Lot and ensure that its subsequent use is compliant and that identified health and safety concerns are rectified.

(v) If a Lot is described at the time of the Sale as in "working order" that Lot is understood to have no defect which renders it incapable of the reasonable work for which it is intended.

(vi) A Lot including any electrical item will have been inspected by an electrician. For those items which have not been inspected the plug will be removed and sold as scrap. Where electrical equipment is sold without specific instructions for its use it is the responsibility of the Buyer to seek independent advice as to its safe operation. The Auctioneers shall have no liability for the safe operation of the item by the Buyer.

#### 10. VEHICLES AND TRAILERS

The Purchaser of any vehicle or trailer is responsible for complying with all legal requirements and road traffic laws and for obtaining all certificates, permits or other authorisations necessary before such vehicle or trailer can be used on the road.

#### 11. RESERVE PRICE

The Seller shall be entitled to place a Reserve Price on any Lot prior to the Sale being the minimum amount for which the Lot may be sold.

#### 12. BIDDING

(i) No person may bid without warranting their identity to the Auctioneers.

(ii) The Auctioneers may accept written instructions to bid on behalf of any prospective Buyer but with no liability in the case of any error arising out of such instructions. Any instructions accepted shall be at the risk of the prospective Buyers who will be deemed to have viewed the Lot. The Auctioneers accept no responsibility in connection with the commissioning of their staff to bid for a Lot.

(iii) The Auctioneers may at their discretion make arrangements to receive bids over the telephone or otherwise from prospective Buyers not physically present at the Sale. Where such a facility is offered prospective Buyers wishing to use it must register with the Auctioneers in advance of the Sale. The Auctioneers accept no liability in relation to telecommunications facilities and connections nor to the means by which such prospective Buyers may seek to communicate with the Auctioneers.

(iv) Bids shall be made exclusive of any VAT and Buyer's Premium which may apply.

(v) The Auctioneers may refuse to accept the bidding of any person without giving any reason.

(vi) The person who makes the highest bid acceptable to the Auctioneers shall be the Buyer on the fall of the hammer.

(vii) A Bidder is deemed to have inspected any Lot for which he is bidding and if successful in that bidding agrees to take it with all faults and imperfections and to be responsible for ensuring its subsequent compliance with the law.

(x) The Buyer warrants that he is able to pay in accordance with these Conditions.

(xi) In the event of a dispute between two or more bidders as to which is the Buyer the dispute shall be settled at the absolute discretion of the Auctioneers.

(xii) Transfers of purchases will only be recognised at the sole discretion of the Auctioneers.

#### 13. PAYMENT BY BUYERS

(i) Unless otherwise agreed with the Auctioneers the Buyer shall pay the Auctioneers in full on the day of the Sale for the Lot purchased together with any charges Buyer's Premium or other payment due under these Conditions before removing that Lot from the Saleground.

(ii) That payment is to be by a means approved by the Auctioneers.

(iii) Where the Buyer offers cash in settlement the Auctioneers will not accept more than the equivalent at the time of the Sale in pounds sterling of fifteen thousand euros for transactions at any one Sale in order to comply with the Money Laundering Regulations 2007.

(iv) Where a Buyer defaults on a payment the Auctioneers reserve the right to re-sell the Lot and to charge the Buyer for any expenses and loss incurred by reason of the failure of the Buyer to complete his purchase and to retain any profit that may arise from that resale.

(v) The Auctioneers reserve the right to charge the Buyer interest on any payment outstanding from 5 Working Days after the day of the Sale together with any reasonable debt recovery charges such rates and charges for all transactions to be those prescribed for commercial debts by the Late Payment of Commercial Debts (Interest) Act 1998 as amended.

(vi) If the Auctioneers have paid the Seller the Sale Proceeds due for a Lot before the Buyer has paid the Auctioneers in full for the Lot then the Auctioneers shall have a lien on the Lot until the outstanding amount is paid by the Buyer to the Auctioneers.

(vii) In the event of any sale by the Buyer of a Lot before full payment has been made the Buyer shall hold the proceeds of such sale on trust for the Auctioneers to discharge the lien referred to at Clause 14(vi).

#### 14. RESPONSIBILITY FOR LOTS

From the fall of the hammer for a Lot that Lot is the liability of the Buyer who is responsible for its safe use any damage to it and for complying with all legal requirements.

#### 15. BUYER'S PREMIUM

There will be no buyer's premium.

#### 16. VALUE ADDED TAX

VAT at the standard applicable rate will be added to the sale price of all lots unless they are exempt.

#### 17. RESALE DUE TO FAILURE TO COMPLY WITH THESE CONDITIONS

(i) Where a Lot has been sold to a Buyer who then fails to comply with the Conditions the Auctioneers may without prejudice to any other rights they may have resell that Lot either by public auction or private contract. If the price achieved on resale is less than Hammer Price together with any expenses arising the deficit shall be due as a debt from the original Buyer of the Lot.

(ii) The defaulter shall not be entitled to any part of the proceeds which may arise by such re-sale which shall remain the property of the Auctioneers.

(iii) Expenses due from the defaulter shall be deemed to include the Auctioneers' commission on the re-sale and all other expenses that would be due on a Sale under these Conditions.

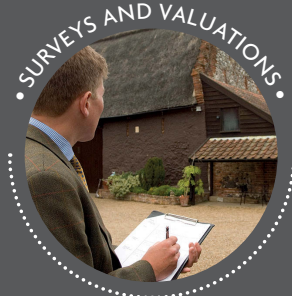
#### 18. REMOVAL OF LOTS FROM THE SALEGROUND

(i) The Auctioneers accept no liability for Lots while on the Saleground whether sold or unsold.

(ii) Where the Saleground is not in the permanent occupation of the Auctioneers the Auctioneers are entitled to dispose of any Lot which (without express written consent of the Auctioneers) has not been collected within 5 Working Days from the day on which it was sold or last offered for sale or such period as shall have been announced in the special conditions. For the avoidance of doubt any monies arising from such a disposal will be paid to and retained by the Auctioneers.

#### 19. APPLICABLE LAW

These Conditions shall be governed by and construed in accordance with the law of England and Wales. All transactions to which these Conditions apply and all connected matters shall also be governed by the law of England and Wales.



**DID YOU KNOW...**  
WE OFFER  
THE COMPLETE  
PROPERTY SERVICE?



Visit our website to discover the complete range of professional services on offer at Arnolds Keys.

**arnoldskeys.com**





Lot 549



Lot 548



Lot 550



Lot 551

[arnoldskeys.com/auctions](https://arnoldskeys.com/auctions)

PROVIDING RURAL SURVEYING, AUCTION  
AND LAND AGENCY SERVICES SINCE 1860

2 Prince of Wales Road  
Norwich | Norfolk  
NR1 1LB

**01603 620551**

8 Market Place  
Aylsham | Norfolk  
NR11 6EH

**01603 250808**

**Arnolds | Keys**  
Irelands Agricultural