



CGI for illustrative purposes only.

Plot 6 | The Chestnut

4 bedroom home

Occupying a substantial corner plot "The Chestnut" is spacious both inside and out. Providing the largest internal accommodation of this release. The Chestnut largely benefits from being fitted with solar photo voltaic panels, this really is a family home with a difference. The space provided by the generous garden makes it ideal for the family or keen gardener with attractive landscaping to the front with Estate fencing, driveway parking and double open cart shed with charming distressed oak feature beams.

- 4 double bedrooms
- Master bedroom with en-suite
- Family bathroom with shower
- Open plan living room, bespoke Mulberry fitted kitchen with solid stone work surfaces
- Utility room
- Garden, garage and parking
- Underfloor heating



Arnolds | Keys

2 Prince of Wales Road
Norwich | Norfolk
NR1 1LB



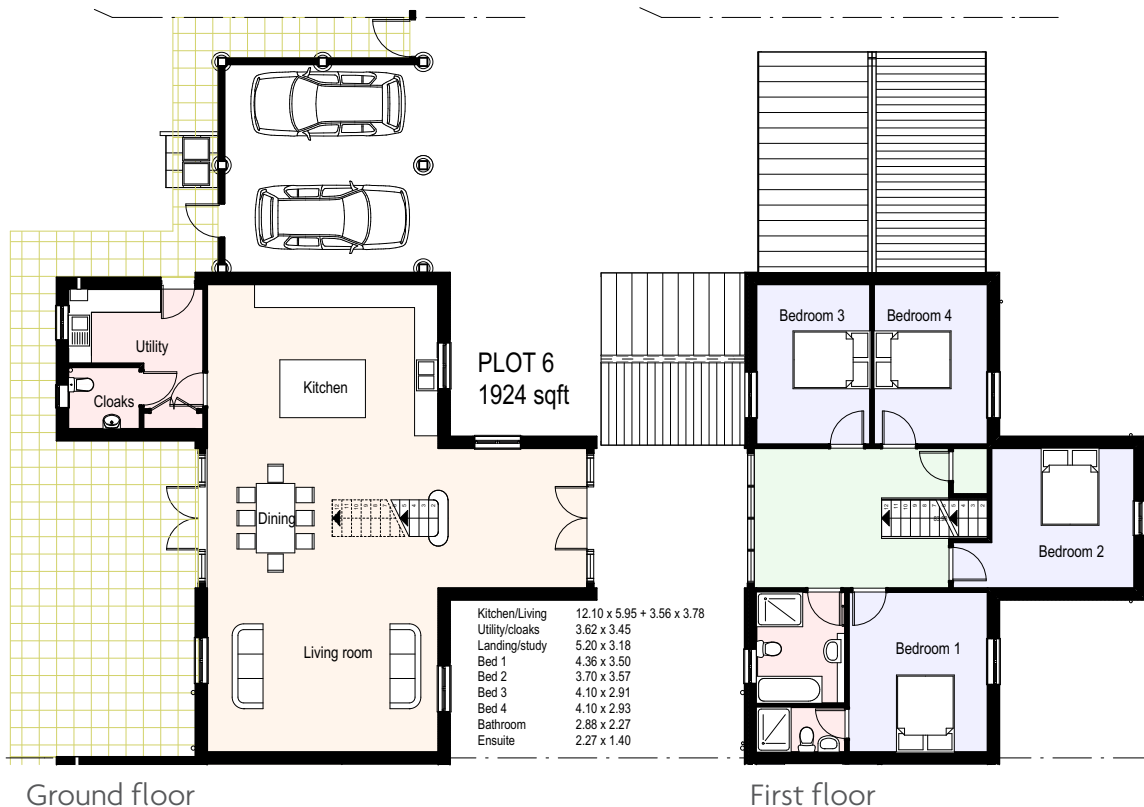
Plot 6 | The Chestnut

4 bedroom home

You are met immediately upon entering the home with a generous reception area leading to a impressive glass and oak stairway to the first floor. As you explore further you are charmed by the Stylish “Mulberry” kitchen with central island unit, leading to the utility room and cloakroom towards the rear of the property. The open plan living area extends across the ground floor with French windows giving access to the generous garden and allowing natural light to flood the room.



CGI for illustrative purposes only.



Upon reaching the top of the stairs the Full height glazed opening gives a stunning view of the garden and open countryside from the landing, which is a room in own right and could be easily utilised as a study or reading area. This then leads onto four well proportioned double bedrooms with en-suite to master and family bathroom.

If open plan living doesn't suit your style, these properties have been carefully designed to be easily divided into 2 or even 3 separate rooms should you so wish.

01603 620551

2 Prince of Wales Road | Norwich | Norfolk | NR1 1LB
 norwich@arnoldskeys.com | arnoldskeys.com

LOCAL KNOWLEDGE | LOCAL PEOPLE | LOCAL PROPERTY

