



CGI for illustrative purposes only.

Plot 4 | The Hawthorn

3 bedroom home

You approach this charming home by the impressive herringbone pathway, leading from the garage and drive way area to the stylish black composite front door. As you move closer you can't help but notice the high-quality brickwork in a traditional rural blend brick, this coupled with the pantile roof and black weatherboarding gives the appearance of a true single storey country home.

- 3 double bedrooms
- Master bedroom with en-suite
- Family bathroom with shower
- Open plan living room, bespoke Mulberry fitted kitchen with solid quartz work surfaces
- Utility room
- Garden, garage and parking
- Underfloor heating

Arnolds | Keys

2 Prince of Wales Road
Norwich | Norfolk
NR1 1LB



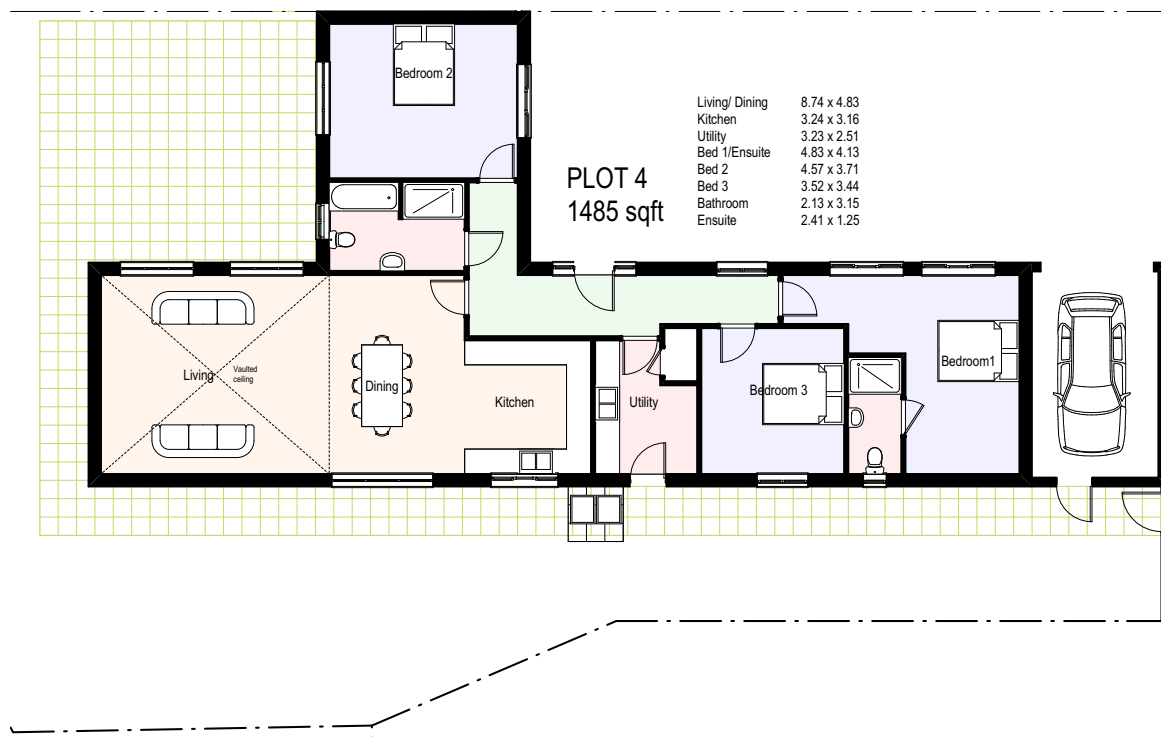
Plot 4 | The Hawthorn

3 bedroom home

The central hallway welcomes you inside and gives access to the three double bedrooms with en-suite to master, family bathroom, utility and towards rear of the property, the open plan style kitchen opens up into a spacious living space with a vaulted ceiling and feature beam. Positioned in this way it extenuates the feeling of privacy and also brings the enjoyment of the garden to the inside and whilst inviting an abundance of natural light to enter into the home.



CGI for illustrative purposes only.



The Hawthorn is heated by a zone-controlled mains gas underfloor heating system throughout, keeping the temperature comfortable. The enclosed rear garden provides a private and enclosed outside space with paved patio area and established trees, providing enough room to embrace the outdoors while remaining manageable.

01603 620551

2 Prince of Wales Road | Norwich | Norfolk | NR1 1LB
norwich@arnoldskeys.com | arnoldskeys.com

LOCAL KNOWLEDGE | LOCAL PEOPLE | LOCAL PROPERTY

